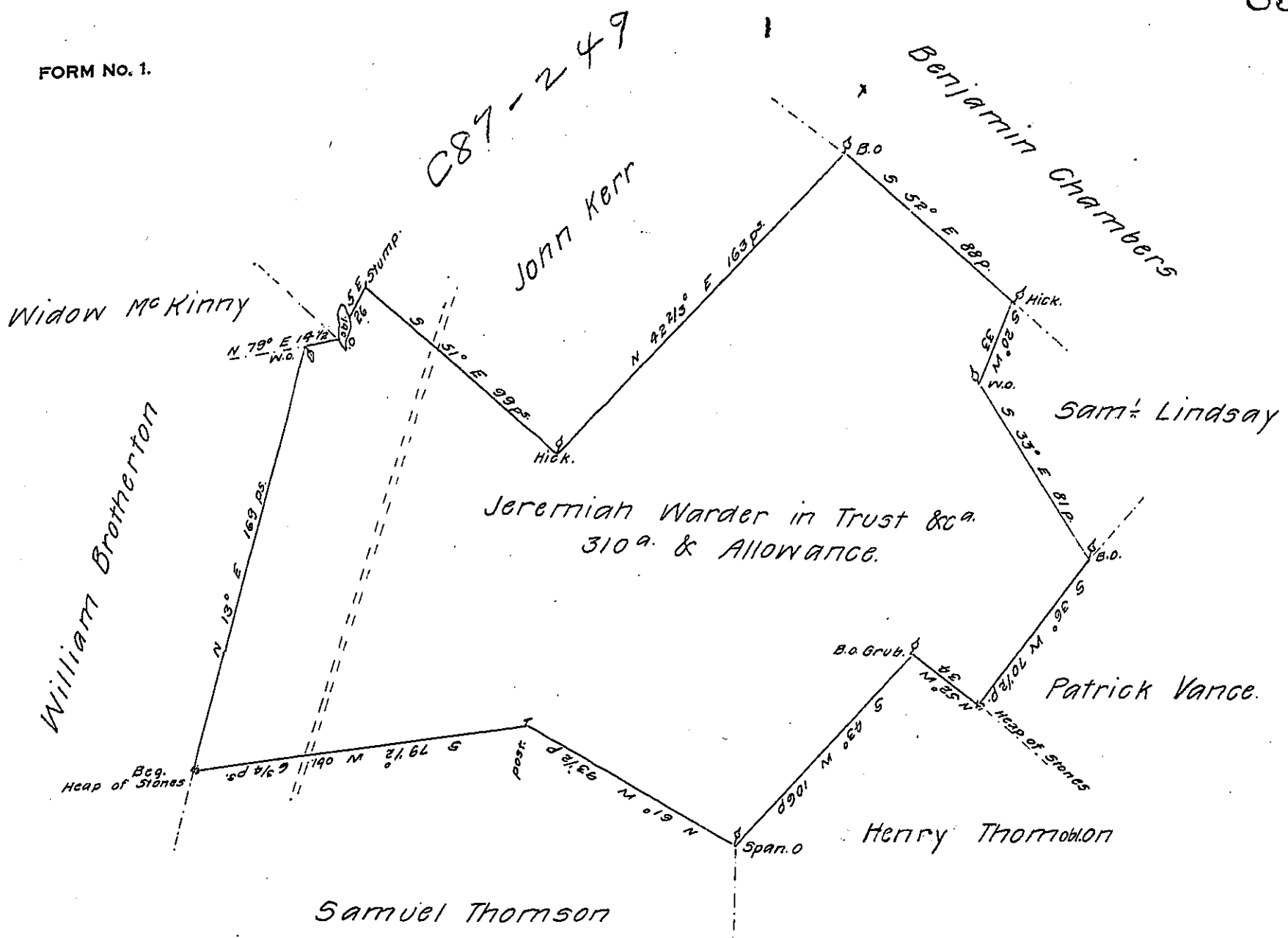


FORM No. 1.

C87-249



A Draught of a tract of land situate in Guilford township in the County of Cumberland Containing three hundred and ten acres and an Allowance of six P Cent for roads. Surveyed June 8<sup>th</sup> 1782 in Pursuance of a warrant granted to Jeremiah Warder in trust for the Creditors of Daniel Clark, bearing date the 28<sup>th</sup> day of February 1774.

Matt<sup>w</sup> Henderson D.S.

To John Lukens Esq<sup>r</sup>  
 Surveyor General.  
 now Franklin Co<sup>y</sup>.

IN TESTIMONY that the above is a copy of the original remaining on file in the Department of Internal Affairs of Pennsylvania, made conformably to an Act of Assembly approved the 16th day of February 1833, I have hereunto set my hand and caused the Seal of said Department to be affixed at Harrisburg, this twenty-second day of June 1907.

*Henry Howck*  
 Secretary of Internal Affairs.